

Technical Data Sheet

InVivoMAb anti-mouse CD8 α



Attention: Use of this product constitutes an agreement to Bio X Cell's Terms and Conditions which are included with this product in print and can also be found at <https://bioxcell.com/terms-and-conditions>.

Lot Specific Information

Lot Number: Lot Specific*
Volume: Lot Specific*
Concentration: Lot Specific* (generally 4 to 11 mg/ml) *
Total Protein: Lot Specific*

*This information will be noted on the certificate of analysis that ships with this product.

Product Information

Catalog Number: BE0061
Clone: 2.43
Isotype: Rat IgG2b, κ
Recommended Isotype Control(s): InVivoMAb rat IgG2b isotype control, anti-keyhole limpet hemocyanin
Recommended Dilution Buffer: InVivoPure pH 7.0 Dilution Buffer
Immunogen: Mouse CTL clone L3
Reported Applications: *in vivo* CD8 $^{+}$ T cell depletion
Western blot
Formulation: PBS, pH 7.0
Contains no stabilizers or preservatives
Endotoxin: <2EU/mg (<0.002EU/ μ g)
Determined by LAL gel clotting assay
Purity: >95%
Determined by SDS-PAGE
Sterility: 0.2 μ m filtration
Production: Purified from cell culture supernatant in an animal-free facility
Purification: Protein G
RRID: [AB_1125541](https://europe.rrid.org/AB_1125541)
Molecular Weight: 150 kDa

Description

The 2.43 monoclonal antibody reacts with mouse CD8 α . The CD8 antigen is a transmembrane glycoprotein that acts as a co-receptor for the T cell receptor (TCR). Like the TCR, CD8 binds to class I MHC molecules displayed by antigen presenting cells (APC). CD8 is primarily expressed on the surface of cytotoxic T cells, but can also be found on thymocytes, natural killer cells, and some dendritic cell subsets. CD8 most commonly exists as a heterodimer composed of one CD8 α and one CD8 β chain however, it can also exist as a homodimer composed of two CD8 α chains. Both the CD8 α and CD8 β chains share significant homology to immunoglobulin variable light chains. The molecular weight of each CD8 chain is approximately 34 kDa. The 2.43 antibody exhibits depleting activity when used *in vivo*.

Storage

Store at the stock concentration at 4°C . **Do not freeze.**

It is not uncommon for a floccule or precipitate to appear during storage. The floccule is typically buffer salts precipitating out of solution or a small bit of protein aggregation. For information on how to remove floccules or precipitates see our FAQ's at <https://bioxcell.com/faqs>.

Protocol Information

Since applications vary, each investigator should use the application references as a guide to help estimate the appropriate dose or concentration. The dose or concentration can be further optimized experimentally in a dose response or titration

experiment.

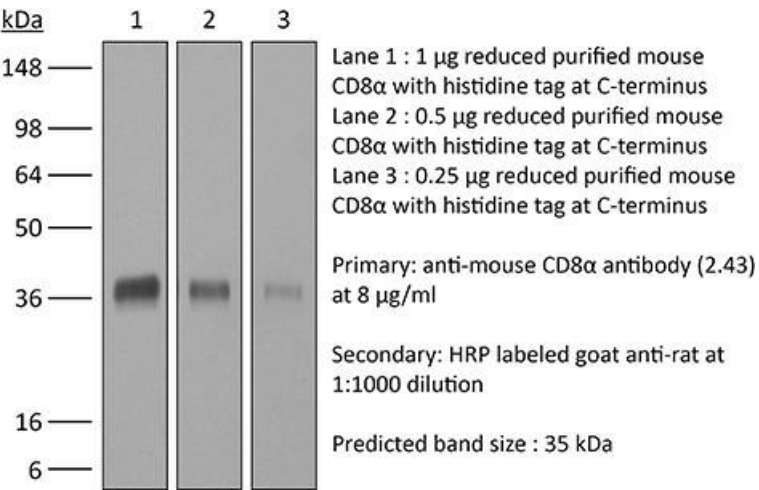
Application References

For a complete list of references, visit https://bioxcell.com/be0061?bxcs=9k1b3a#tab_references or scan the QR code below.



Binding Validation

Validation data shown below confirms that this clone binds to its target antigen. For lot specific binding validation data, e-mail technicalservice@bioxcell.com.



Bio X Cell, LLC
<https://bioxcell.com>
+1-866-787-3444
customerservice@bioxcell.com

Conditions: For research use only. Not for use in diagnostic or therapeutic procedures.
Not for resale.
Bio X Cell, Bio X Cell logo, and all other trademarks are the property of Bio X Cell, LLC © 2025 Bio X Cell, LLC