

# Technical Data Sheet

## InVivoMAb anti-mouse TIM-3 (CD366)



**Attention:** Use of this product constitutes an agreement to Bio X Cell's Terms and Conditions which are included with this product in print and can also be found at <https://bioxcell.com/terms-and-conditions>.

### Lot Specific Information

Lot Number: Lot Specific\*  
Volume: Lot Specific\*  
Concentration: Lot Specific\* (generally 4 to 11 mg/ml) \*  
Total Protein: Lot Specific\*

\*This information will be noted on the certificate of analysis that ships with this product.

### Product Information

Catalog Number: BE0115  
Clone: RMT3-23  
Isotype: Rat IgG2a,  $\kappa$   
Recommended Isotype Control(s): InVivoMAb rat IgG2a isotype control, anti-trinitrophenol  
Recommended Dilution Buffer: InVivoPure pH 7.0 Dilution Buffer  
Immunogen: Recombinant mouse TIM-3  
Reported Applications: *in vivo* TIM-3 neutralization  
*in vitro* TIM-3 blocking  
Flow cytometry  
Formulation: PBS, pH 7.0  
Contains no stabilizers or preservatives  
Endotoxin: <2EU/mg (<0.002EU/ $\mu$ g)  
Determined by LAL gel clotting assay  
Purity: >95%  
Determined by SDS-PAGE  
Sterility: 0.2  $\mu$ m filtration  
Production: Purified from cell culture supernatant in an animal-free facility  
Purification: Protein G  
RRID: [AB\\_10949464](https://abnova.com/AB_10949464)  
Molecular Weight: 150 kDa

### Description

The RMT3-23 monoclonal antibody reacts with mouse TIM-3 (T cell immunoglobulin and mucin domain-3) also known as CD366. TIM-3 is a 60 kDa member of the TIM family of immune checkpoint receptors and exists as a type I transmembrane glycoprotein with a mucin-like domain in its extracellular portion and a tyrosine phosphorylation motif in its cytoplasmic portion. TIM-3 is specifically expressed at high levels on the surface of Th1 lymphocytes whereas Th2 lymphocytes express TIM-1 and TIM-2. TIM-3 activation occurs via binding to the cell-associated C-type lectin galectin-9. Upon binding TIM-3 induces apoptosis of Th1 cells. Inhibition of TIM-3 signaling in mice has been shown to exacerbate experimental autoimmune encephalomyelitis, promote IFN $\gamma$  production and Th1 cell proliferation. Tim-3 has also been shown to be required for the induction of tolerance, as both TIM-3 knockout animals and mice treated with TIM-3-Ig fusion protein display defects in the induction of antigen-specific tolerance. Additionally, TIM-3 signaling is currently being explored as a cancer immunotherapy target as CD8 T cells which express both TIM-3 and PD-1 exhibit greater defects in both cell-cycle progression and effector cytokine production than cells that express PD-1 alone. The RMT3-23 antibody acts as a TIM-3 receptor antagonist and has been shown to have functional activity including suppressing tumor cell growth in a murine sarcoma model.

### Storage

Store at the stock concentration at 4°C . **Do not freeze.**

It is not uncommon for a floccule or precipitate to appear during storage. The floccule is typically buffer salts precipitating out

of solution or a small bit of protein aggregation. For information on how to remove floccules or precipitates see our FAQ's at <https://bioxcell.com/faqs>.

## Protocol Information

Since applications vary, each investigator should use the application references as a guide to help estimate the appropriate dose or concentration. The dose or concentration can be further optimized experimentally in a dose response or titration experiment.

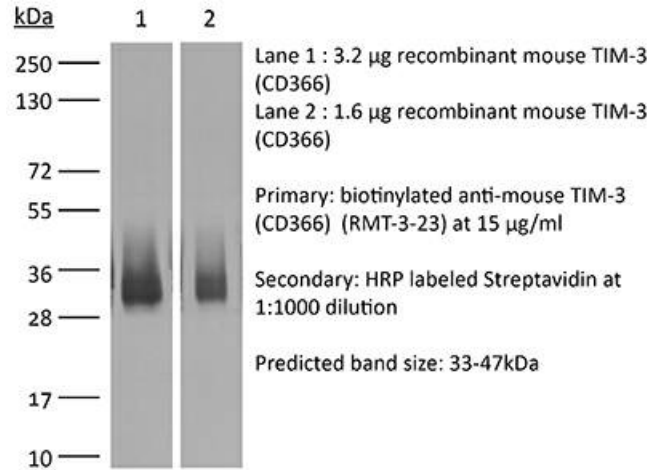
## Application References

For a complete list of references, visit [https://bioxcell.com/be0115?bxcs=9k1b3a#tab\\_references](https://bioxcell.com/be0115?bxcs=9k1b3a#tab_references) or scan the QR code below.



## Binding Validation

Validation data shown below confirms that this clone binds to its target antigen. For lot specific binding validation data, e-mail [technicalservice@bioxcell.com](mailto:technicalservice@bioxcell.com).



**Bio X Cell, LLC**  
<https://bioxcell.com>  
+1-866-787-3444  
[customerservice@bioxcell.com](mailto:customerservice@bioxcell.com)

*Conditions: For research use only. Not for use in diagnostic or therapeutic procedures.*

*Not for resale.*

**Bio X Cell, Bio X Cell logo, and all other trademarks are the property of Bio X Cell, LLC © 2025 Bio X Cell, LLC**