

Technical Data Sheet

InVivoPlus anti-mouse TIM-3 (CD366)



Attention: Use of this product constitutes an agreement to Bio X Cell's Terms and Conditions which are included with this product in print and can also be found at <https://bioxcell.com/terms-and-conditions>.

Lot Specific Information

Lot Number: Lot Specific*
Volume: Lot Specific*
Concentration: Lot Specific* (generally 4 to 11 mg/ml) *
Total Protein: Lot Specific*

*This information will be noted on the certificate of analysis that ships with this product.

Product Information

Catalog Number: BP0115
Clone: RMT3-23
Isotype: Rat IgG2a, κ
Recommended Isotype Control(s): InVivoPlus rat IgG2a isotype control, anti-trinitrophenol
Recommended Dilution Buffer: InVivoPure pH 7.0 Dilution Buffer
Immunogen: Recombinant mouse TIM-3
Reported Applications: *in vivo* TIM-3 neutralization
in vitro TIM-3 blocking
Flow cytometry
Formulation: PBS, pH 7.0
Contains no stabilizers or preservatives
Endotoxin: <1EU/mg (<0.001EU/ μ g)
Determined by LAL gel clotting assay
Purity: >95%
Determined by SDS-PAGE
Sterility: 0.2 μ m filtration
Production: Purified from cell culture supernatant in an animal-free facility
Purification: Protein G
Aggregation: <5%
Determined by SEC
RRID: [AB_10949464](https://eutils.ncbi.nlm.nih.gov/entrez/eutils/rrid.cgi?db=AB)
Molecular Weight: 150 kDa

Murine Pathogen Test Results

Mouse Norovirus: Negative, Mouse Parvovirus: Negative, Mouse Minute Virus: Negative, Mouse Hepatitis Virus: Negative, Reovirus Screen: Negative, Lymphocytic Choriomeningitis virus: Negative, Lactate Dehydrogenase-Elevating Virus: Negative, Mouse Rotavirus: Negative, Theiler's Murine Encephalomyelitis: Negative, Ectromelia/Mousepox Virus: Negative, Hantavirus: Negative, Polyoma Virus: Negative, Mouse Adenovirus: Negative, Sendai Virus: Negative, Mycoplasma Pulmonis: Negative, Pneumonia Virus of Mice: Negative, Mouse Cytomegalovirus: Negative, K Virus: Negative

Description

The RMT3-23 monoclonal antibody reacts with mouse TIM-3 (T cell immunoglobulin and mucin domain-3) also known as CD366. TIM-3 is a 60 kDa member of the TIM family of immune checkpoint receptors and exists as a type I transmembrane glycoprotein with a mucin-like domain in its extracellular portion and a tyrosine phosphorylation motif in its cytoplasmic portion. TIM-3 is specifically expressed at high levels on the surface of Th1 lymphocytes whereas Th2 lymphocytes express TIM-1 and TIM-2. TIM-3 activation occurs via binding to the cell-associated C-type lectin galectin-9. Upon binding TIM-3 induces apoptosis of Th1 cells. Inhibition of TIM-3 signaling in mice has been shown to exacerbate experimental autoimmune encephalomyelitis, promote IFN γ production and Th1 cell proliferation. Tim-3 has also been shown to be required for the

induction of tolerance, as both TIM-3 knockout animals and mice treated with TIM-3-Ig fusion protein display defects in the induction of antigen-specific tolerance. Additionally, TIM-3 signaling is currently being explored as a cancer immunotherapy target as CD8 T cells which express both TIM-3 and PD-1 exhibit greater defects in both cell-cycle progression and effector cytokine production than cells that express PD-1 alone. The RMT3-23 antibody acts as a TIM-3 receptor antagonist and has been shown to have functional activity including suppressing tumor cell growth in a murine sarcoma model.

Storage

Store at the stock concentration at 4°C . **Do not freeze.**

It is not uncommon for a floccule or precipitate to appear during storage. The floccule is typically buffer salts precipitating out of solution or a small bit of protein aggregation. For information on how to remove floccules or precipitates see our FAQ's at <https://bioxcell.com/faqs>.

Protocol Information

Since applications vary, each investigator should use the application references as a guide to help estimate the appropriate dose or concentration. The dose or concentration can be further optimized experimentally in a dose response or titration experiment.

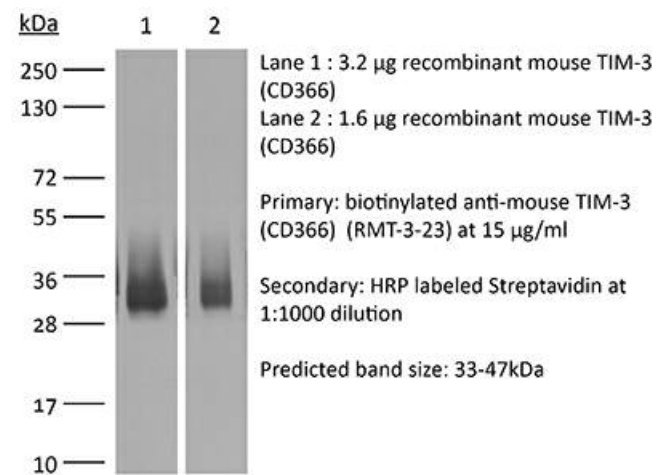
Application References

For a complete list of references, visit https://bioxcell.com/bp0115?bxcs=9k1b3a#tab_references or scan the QR code below.



Binding Validation

Validation data shown below confirms that this clone binds to its target antigen. For lot specific binding validation data, e-mail technicalservice@bioxcell.com.



Bio X Cell, LLC
<https://bioxcell.com>
+1-866-787-3444
customerservice@bioxcell.com

Conditions: For research use only. Not for use in diagnostic or therapeutic procedures.

Not for resale.

Bio X Cell, Bio X Cell logo, and all other trademarks are the property of Bio X Cell, LLC © 2025 Bio X Cell, LLC