

InVivoSIM anti-human TIM-3 (Sabatolimab Biosimilar)

Attention: Use of this product constitutes an agreement to Bio X Cell's Terms and Conditions which are included with this product in print and can also be found at <https://bioxcell.com/terms-and-conditions>.

Lot Specific Information

Lot Number: Lot Specific*
Volume: Lot Specific*
Concentration: Lot Specific* (generally 4 to 11 mg/ml) *
Total Protein: Lot Specific*

*This information will be noted on the certificate of analysis that ships with this product.

Product Information

Catalog Number: SIM0043
Clone: Sabatolimab
Isotype: Human IgG4, κ
Recommended Isotype Control(s): RecombiMAb human IgG4 (S228P) isotype control, anti-hen egg lysozyme
Recommended Dilution Buffer: InVivoPure pH 7.0 Dilution Buffer
Mutations: S228P
Immunogen: Human TIM-3
Reported Applications: Functional assays
ELISA
Flow cytometry
Formulation: PBS, pH 7.0
Contains no stabilizers or preservatives
Endotoxin: <0.5EU/mg (<0.0005EU/ μ g)
Determined by LAL gel clotting assay
Purity: >95%
Determined by SDS-PAGE
Sterility: 0.2 μ m filtration
Production: Purified from cell culture supernatant in an animal-free facility
Purification: Protein A
Aggregation: <5%
Determined by SEC
RRID:
Molecular Weight: 150 kDa

Murine Pathogen Test Results

Mouse Norovirus: Negative, Mouse Parvovirus: Negative, Mouse Minute Virus: Negative, Mouse Hepatitis Virus: Negative, Reovirus Screen: Negative, Lymphocytic Choriomeningitis virus: Negative, Lactate Dehydrogenase-Elevating Virus: Negative, Mouse Rotavirus: Negative, Theiler's Murine Encephalomyelitis: Negative, Ectromelia/Mousepox Virus: Negative, Hantavirus: Negative, Polyoma Virus: Negative, Mouse Adenovirus: Negative, Sendai Virus: Negative, Mycoplasma Pulmonis: Negative, Pneumonia Virus of Mice: Negative, Mouse Cytomegalovirus: Negative, K Virus: Negative

Description

This biosimilar antibody uses the same variable regions as the therapeutic antibody Sabatolimab, making it ideal for research use. Sabatolimab is a humanized IgG4 monoclonal antibody that reacts with human TIM-3 (T cell immunoglobulin and mucin domain-3), also known as CD366. TIM-3 is a 60 kDa member of the TIM family of immune checkpoint receptors and exists as a type I transmembrane glycoprotein with a mucin-like domain in its extracellular portion and a tyrosine phosphorylation motif in its cytoplasmic portion. TIM-3 is specifically expressed at high levels on the surface of Th1 lymphocytes whereas Th2 lymphocytes express TIM-1 and TIM-2. TIM-3 activation occurs via binding to the cell-associated

C-type lectin galectin-9. Upon binding TIM-3 induces apoptosis of Th1 cells. Inhibition of TIM-3 signaling in mice has been shown to exacerbate experimental autoimmune encephalomyelitis, promote IFN γ production and Th1 cell proliferation. Tim-3 has also been shown to be required for the induction of tolerance, as both TIM-3 knockout animals and mice treated with TIM-3-Ig fusion protein display defects in the induction of antigen-specific tolerance. Additionally, TIM-3 signaling is currently being explored as a cancer immunotherapy target as CD8 T cells which express both TIM-3 and PD-1 exhibit greater defects in both cell-cycle progression and effector cytokine production than cells that express PD-1 alone. Sabatolimab binds to TIM-3 with subnanomolar affinity, blocks its interaction with its ligand, phosphatidylserine (PtdSer), and partially blocks the interaction of TIM-3 with Galectin-9.

Storage

Store at the stock concentration at 4°C . **Do not freeze.**

It is not uncommon for a floccule or precipitate to appear during storage. The floccule is typically buffer salts precipitating out of solution or a small bit of protein aggregation. For information on how to remove floccules or precipitates see our FAQ's at <https://bioxcell.com/faqs>.

Protocol Information

Since applications vary, each investigator should use the application references as a guide to help estimate the appropriate dose or concentration. The dose or concentration can be further optimized experimentally in a dose response or titration experiment.

Application References

For a complete list of references, visit

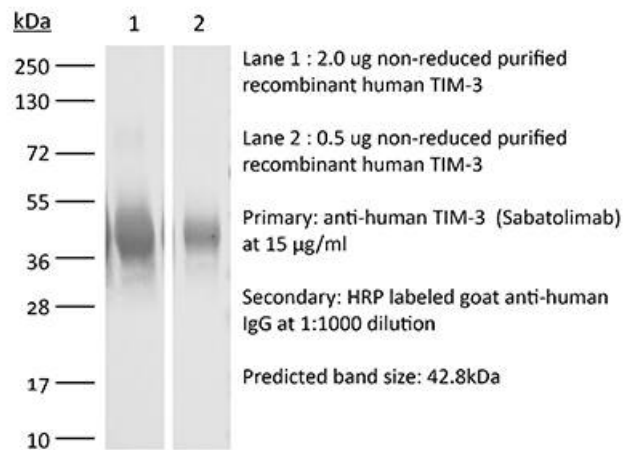
https://bioxcell.com/sim0043?bxcs=9k1b3a#tab_references

or scan the QR code below.



Binding Validation

Validation data shown below confirms that this clone binds to its target antigen. For lot specific binding validation data, e-mail technicalservice@bioxcell.com.



Bio X Cell, LLC

<https://bioxcell.com>

+1-866-787-3444

customerservice@bioxcell.com

Conditions: For research use only. Not for human use. Not for use in diagnostic or therapeutic procedures.

Not for resale.

Bio X Cell, Bio X Cell logo, and all other trademarks are the property of Bio X Cell, LLC © 2025 Bio X Cell, LLC